

Conventional Products Konvansiyonel Ürünler

HEA / HEB Beam / HEA / HEB Profil



UB Beam / UB Profil



UPN Channel / UPN Channel



PFC Channel / PFC Profil



C Channel / C Profil



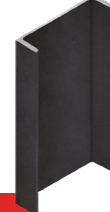
UPE Channel / UPE Profil



UAC Channel / UAC Profil



CH Channel / CH Profil



| Size / Ebat (mm) | 8 | 10 | 16 | 20 | 30 | 38 | 40 | 44 | 50 | 70 | 75 | 76 | 80 | 100 | 120 | 150 | 160 | 200 | 203 | 250 | 254 | 260 | 270 | 280 | 300 |
|--------------------------------------|---|----|----|----|----|----|----|----|----|----|----|----|----|-----|-----|-----|-----|-----|-----|-----|-----|-----|-----|-----|-----|
| Product / Ürün | | | | | | | | | | | | | | | | | | | | | | | | | |
| Square / Kare | | | | | | | | | | | | | | | | | | | | | | | | | |
| Round Bar / Yuvarlak | | | | | | | | | | | | | | | | | | | | | | | | | |
| Flat Bar / Lama | | | | | | | | | | | | | | | | | | | | | | | | | |
| Rasp Bar / Batör Lama | | | | | | | | | | | | | | | | | | | | | | | | | |
| TH / V | | | | | | | | | | | | | | | | | | | | | | | | | |
| Equal Angle / Eşitkenar Köşebent | | | | | | | | | | | | | | | | | | | | | | | | | |
| T Bar / T Profil | | | | | | | | | | | | | | | | | | | | | | | | | |
| UAC | | | | | | | | | | | | | | | | | | | | | | | | | |
| C Channel / Amerikan Kesit C | | | | | | | | | | | | | | | | | | | | | | | | | |
| W Beam / Amerikan Kesit W | | | | | | | | | | | | | | | | | | | | | | | | | |
| UB | | | | | | | | | | | | | | | | | | | | | | | | | |
| UPN | | | | | | | | | | | | | | | | | | | | | | | | | |
| PFC | | | | | | | | | | | | | | | | | | | | | | | | | |
| CH | | | | | | | | | | | | | | | | | | | | | | | | | |
| UPE | | | | | | | | | | | | | | | | | | | | | | | | | |
| IPN | | | | | | | | | | | | | | | | | | | | | | | | | |
| IPE / IPE-A | | | | | | | | | | | | | | | | | | | | | | | | | |
| IPE AA / AAA / AAAA | | | | | | | | | | | | | | | | | | | | | | | | | |
| HEA | | | | | | | | | | | | | | | | | | | | | | | | | |
| HEB | | | | | | | | | | | | | | | | | | | | | | | | | |
| GI | | | | | | | | | | | | | | | | | | | | | | | | | |
| Wide Flat Bar / Geniş Lama | | | | | | | | | | | | | | | | | | | | | | | | | |
| Window Sections / Pencere Profili | | | | | | | | | | | | | | | | | | | | | | | | | |
| Lipped Channels / C Shape / C Profil | | | | | | | | | | | | | | | | | | | | | | | | | |

Turkey Addresses Türkiye Adresleri

Istanbul Office / İstanbul Ofis
Zorlu Center Residence
Koru Sokak T3 Blok
Beşiktaş / İstanbul
+90 212 813 55 00

Izmir Office / İzmir Ofis
Akdeniz Mah. Şehit Fethi Bey Cad.
No: 55 Kat: 16 Heris Tower
Alsancak - Konak / İzmir
+90 232 625 18 60

Izmir Factories / İzmir Fabrikalar
Yeni Foça Yolu
2. ve 3. km Aliağa / İzmir

United Kingdom Office Address Birleşik Krallık Ofis Adresi

Kocaer Steel UK Ltd.
Birleşik Krallık Merkez Ofis
2 Alexandra Gate, Fford, Pengam,
Cardiff CF24 2SA
+44 2920 894870-78

scsales@kocaersteel.com
sales@kocaersteel.com
kocaersteel.com

Go Beyond Excellence

KOCAER
STEEL

Conventional Products
Konvansiyonel Ürünler

Equal Angle /
Köşebent



Flat Bar / Lama



Round Bar /
Yuvarlak Profil



Conventional Products
Konvansiyonel Ürünler

IPE Beam / IPE Profil



IPN Beam /
NPI Profil



W Beam / W Profil



Conventional Products
Konvansiyonel Ürünler

Square Bar /
Kare Profil



Serrated Flat Bar /
Tırtıklı Lama

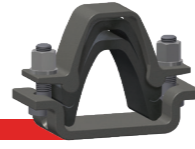


T Bar / T Profil



Industrial Products
Endüstriyel Ürünler

Clamps / Kelepçe



Traversal Junctions /
Bağlantı Fırçası



Rasp Bar / Batör Lama



Industrial Products
Endüstriyel Ürünler

W Beam / W Profil



C Shape / C Profil



IPE / IPEA Beam /
IPE / IPEA Profil



Industrial Products
Endüstriyel Ürünler

TH / V Profile /
TH / V Profil



GI NO 120 Profile /
GI NO 120



K Profile / K Profil

